

Vision

To ignite hope in the world

Mission

Inspired by Christ's love, Children's HopeChest releases the potential existing within vulnerable communities, starting with the children.

Theory of Impact

We come alongside local leaders to cultivate holistic community development through two-way transformational relationships.

We believe that...

Every person has inherent value, abilities, and assets. Everyone deserves to be treated with dignity and grace.

Through partnership we can improve the lives of individuals and their community and in turn make the world a better place.

Transformation is not a quick fix or transactional. It must be long-term and self-sustaining.

Through building relationships, discipleship and education, the communities we serve realize their God-given potential, overcome generational poverty, and can rise to meet their potential.

We glorify God by coming alongside and loving the vulnerable.

Faith Driven

Our faith in the redemptive work of Christ drives our work and our decisions.

Integrity in All Things

We fulfill our commitments. We do the right thing, even when no one is looking.

Values

Dignity

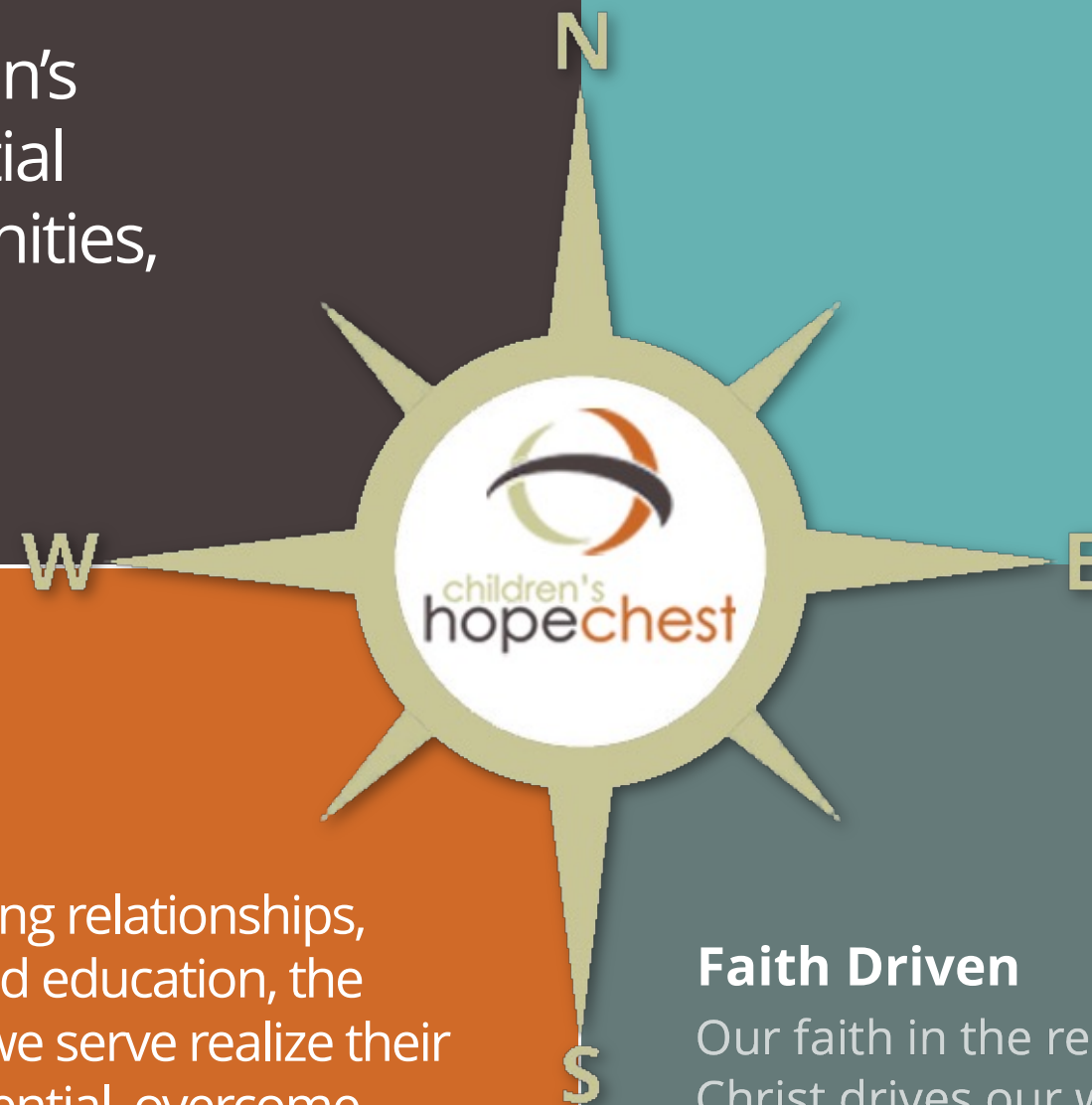
We treat everyone with respect, empathy, and grace.

Learner Mindset

We are driven by continuous improvement, innovation, and curiosity.

Relationships Matter

Our approach is relational rather than transactional. We are created for relationship.



Vision 2030 Impact

500,000 Lives

(Apx. 100,000)

Individual lives touched and impacted in the name of Christ

30 x 30

(Apx. 9,300)

30,000 children actively enrolled in programming

100 CarePoints

(68)

100 communities being transformed

15 CarePoints Graduated

(0, initial graduations in 2026)

Continuing to impact their communities as successfully operating

Community Based Organizations (CBO's)

5 Countries

(5)

Countries with deep impact

OBJECTIVE



Successful CarePoint Graduation

Successful CarePoint graduation means CarePoint community leadership has cast its own vision for how the continuing operations of the newly graduated Community Based Organization (CBO) will impact the community. HopeChest training and equipping the community leading up to graduation will end dependency on US support, and the CBO will have self-sufficient operational capacity.

OBJECTIVE

World-Class Stakeholder Engagement

HopeChest Stakeholders will enjoy close and cherished relationships that defy cultural and distance challenges through world-class storytelling, reporting, and travel that engages, inspires, and transforms. HopeChest Alumni Associations will engage graduates and HopeChest friends to continue impacting their nations. HopeChest will have the enthusiastic support of a strong network of US-based Ambassadors advocating for the organization.

OBJECTIVE

Diverse Revenue Streams

The financial position of HopeChest will strengthen through diversifying its revenue streams, including a robust Transformational Engagement Department (donor relations) that fosters genuine care for the stewardship of God's resources residing in individuals and granting foundations. The establishment of earned income entities (for-profit)—both in the US and overseas—to reduce dependency on donors is paramount.

VITALS

Community Impact

CarePoints Graduated

Donor Engagement

Partnership Vitality

Employee Engagement

Financial Stewardship

Transformative Storytelling